



Soirée du <Test Logiciel>

Agility Maturity Cards - workshop

Christophe MOUSTIER

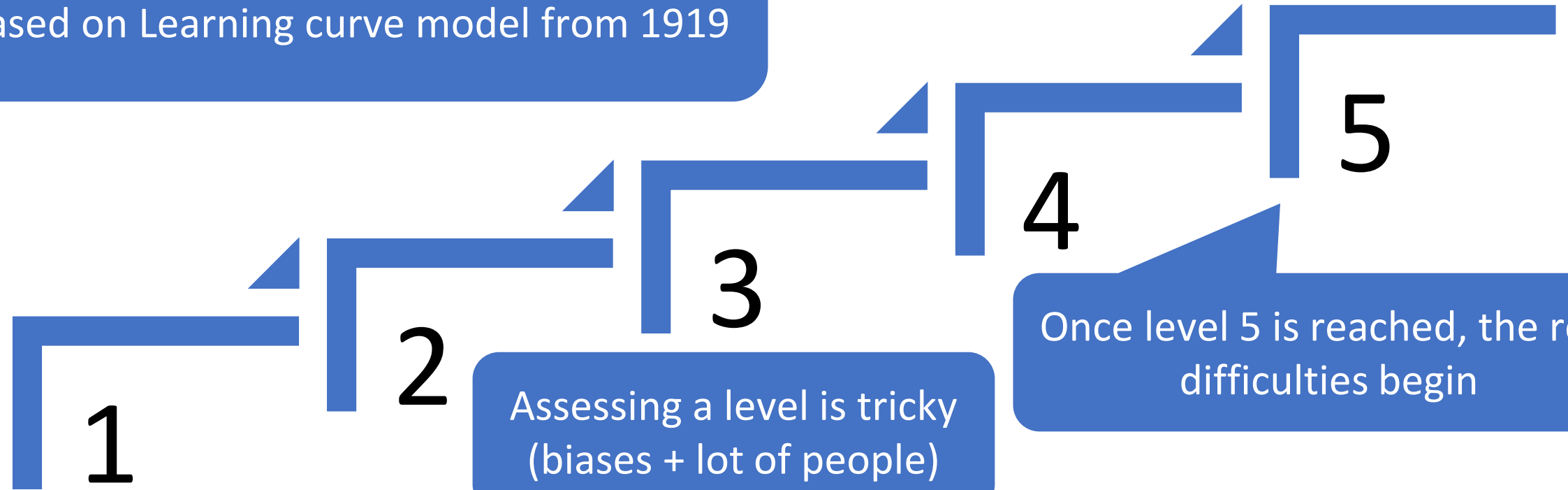
inetum.
Positive digital flow



AGILITEST

Classical « Maturity Models » are wrong!

Born in the 1970s (along with Waterfall)
Based on Learning curve model from 1919

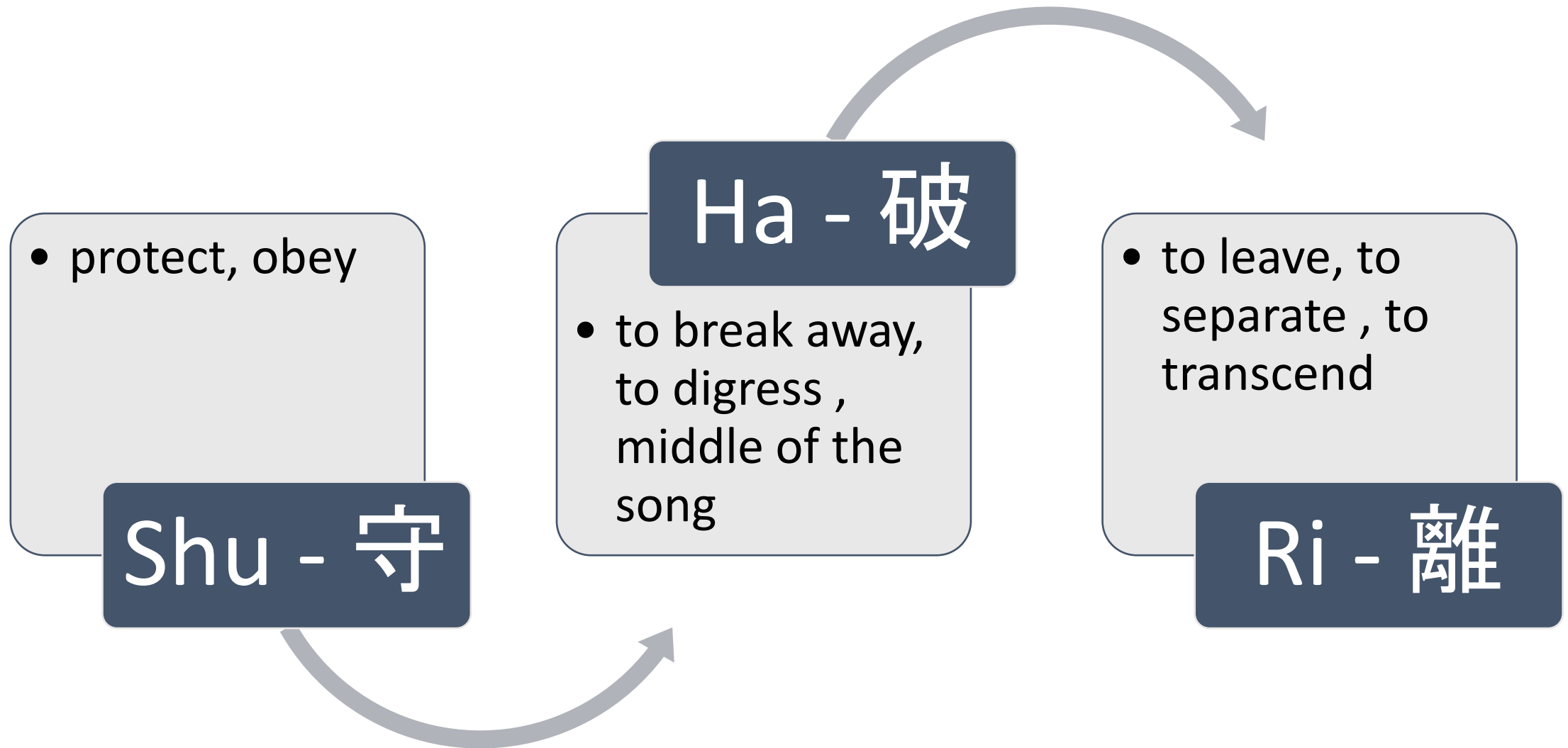


Assessing a level is tricky
(biases + lot of people)

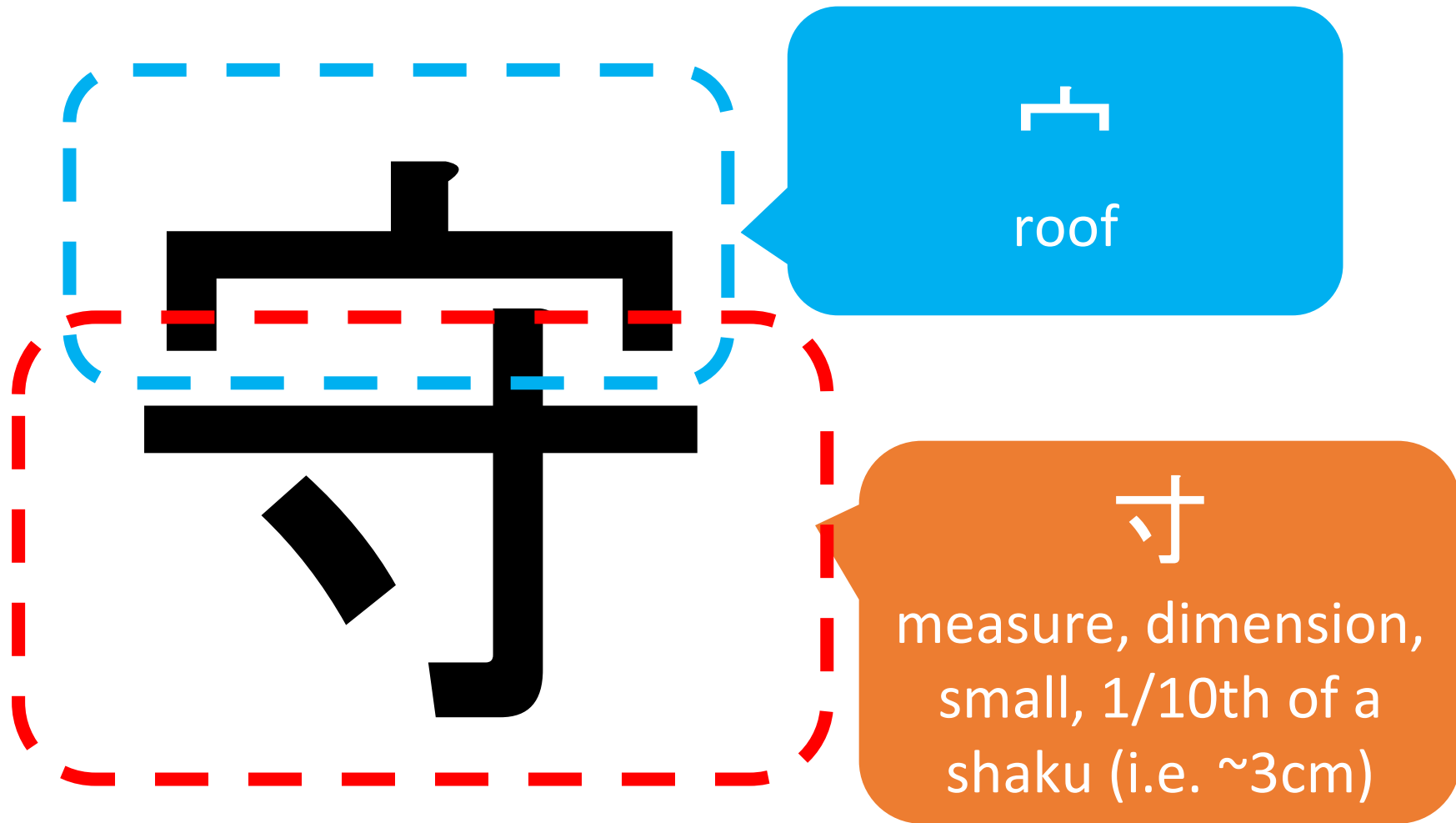
Once level 5 is reached, the real
difficulties begin

Models are not explained
Require strong experience to make it

Sol #1: Agile culture: Shuhari (守破離) model



Shu



Ha

石

stone

破

皮

skin

Mask, Shell, Surface

Ri (1)

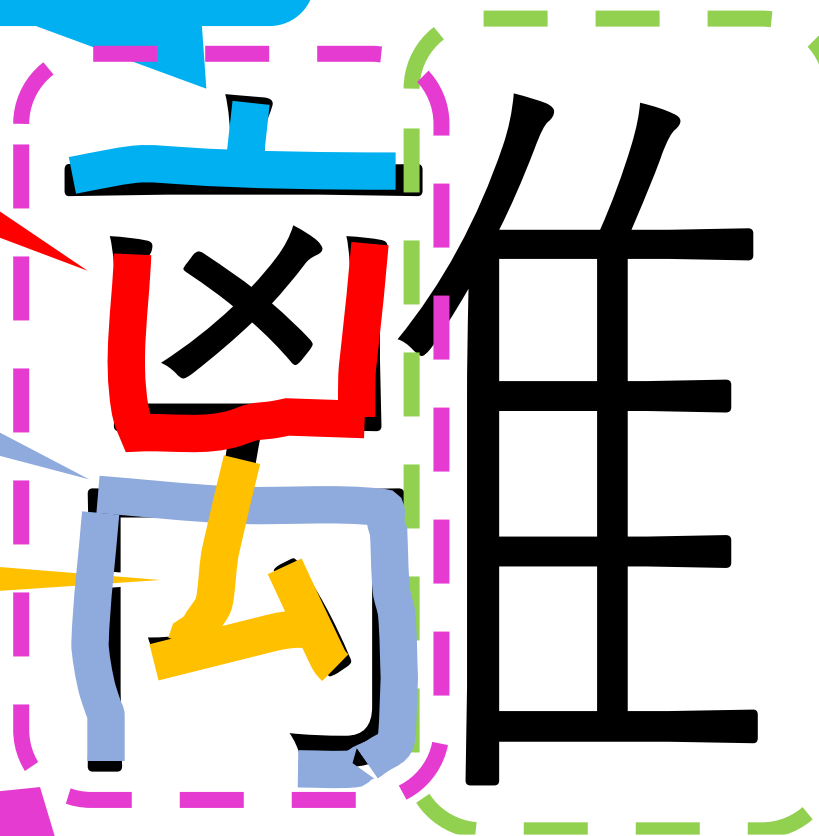
𠂇 : lid of the kettle

凵 : open box

匚 : upturned box

亼 : oneself

bird



禹: Chinese emperor "*Yu the Great*" aka the "Governor of the waters" - invention of irrigation techniques => perseverance
→ "Failure is the mother of success"

Ri (2)

⊥ : lid of the kettle

⌌ : open box

⌌ : upturned
box

⌌ : oneself

bird

*"The opening
of a bird's cage
that will yield
something
great through
perseverance"*

Ri (3)

☒ bad luck,
disaster

*The content
under the lid
of the box*

離

Sol #2: Catalog with good practices



Proposed tool

5 Categories



State of mind



Planning



Improve



Automated testing



Active testing



How to use this tool?

Place for improvement with
SHU-HA-RI

1. The Team decide where to put each card
2. PO agrees on "Next iteration"
3. SM challenges " N/A's "
4. The Team works on " Next iteration " + " What is this"

Already implemented



Next iteration



Future



N/A



What is this?



Renew the snapshot to evaluate progress



Testability of the Product Backlog

The Product Backlog is understandable to the Customer



STATE OF MIND

POLL



<https://www.menti.com/zi6vu7xzpt>



The team is
responsible for the
quality of the
product

Not just the testers

STATE OF MIND



POLL



<https://www.menti.com/zi6vu7xzpt>



Design a better
system

Rather than trying to
break it



STATE OF MIND

POLL



<https://www.menti.com/zi6vu7xzpt>



Understand what to
test

Rather than checking
the functionality



STATE OF MIND

POLL



<https://www.menti.com/zi6vu7xzpt>



Prevent bugs

Rather than seeking its
presence

STATE OF MIND



POLL



<https://www.menti.com/zi6vu7xzpt>



Do everything at the same time

Move towards an organisation where everything can be done at the same time rather than phasing the work



STATE OF MIND

POLL



<https://www.menti.com/zi6vu7xzpt>



The Manager is a Landscape Gardener

The role of the Manager is to shape the working environment rather than the solution



STATE OF MIND

POLL



<https://www.menti.com/zi6vu7xzpt>



Empirical process control

Intention is better than
a perfectly described
but ineffective process



STATE OF MIND

POLL



<https://www.menti.com/zi6vu7xzpt>



Lean approach

Lean concepts are
valuable lessons

STATE OF MIND



POLL



<https://www.menti.com/zi6vu7xzpt>



Continuous progress towards perfection

It is not about having
something perfect but rather
about striving for that
perfection



STATE OF MIND

POLL



<https://www.menti.com/zi6vu7xzpt>



PanTesting

Combination of Double
Learning Loop / Panarchy /
Theory of Constraints /
Testability practices for agile
testing



STATE OF MIND

POLL



<https://www.menti.com/zi6vu7xzpt>



Focus on the entire
solution

Trying to get rid of the
unnecessary and
constantly optimising

STATE OF MIND



POLL



<https://www.menti.com/zi6vu7xzpt>



Search for transparency

Testability is constantly
being improved



STATE OF MIND

POLL



<https://www.menti.com/zi6vu7xzpt>



Decentralize decision making

Application of the
subsidiarity principle



STATE OF MIND

POLL



<https://www.menti.com/zi6vu7xzpt>



Work in a cadenced
and synchronized
way

Pace improves predicti-
vity, synchronisation
facilitates dependencies



STATE OF MIND

POLL



<https://www.menti.com/zi6vu7xzpt>



Adopt an economic view

The organisation must embed the economic dimension in its structure and decisions



STATE OF MIND

POLL



<https://www.menti.com/zi6vu7xzpt>



T-Shape

Although they are specialists in their team, they must be able to match the skills of other team members in simple actions



STATE OF MIND

POLL



<https://www.menti.com/zi6vu7xzpt>



Example Mapping

The refinement of the US is done in "3 Amigos" mode with post-its to brainstorm on the questions and data examples



STATE OF MIND

POLL



<https://www.menti.com/zi6vu7xzpt>



WIP

The amount of work in progress should be as small as possible



STATE OF MIND

POLL



<https://www.menti.com/zi6vu7xzpt>



Unlock the intrinsic
motivation of
employees

Mastery, noble purpose
and autonomy



STATE OF MIND

POLL



<https://www.menti.com/zi6vu7xzpt>



Variability assumption

Any choice must
assume last minute
changes



STATE OF MIND

POLL



<https://www.menti.com/zi6vu7xzpt>



Community of Practice

Communities exist within the company but outside the organisation to share knowledge and know-how



STATE OF MIND

POLL



<https://www.menti.com/zi6vu7xzpt>



More with less

Try to get rid of the unnecessary and constantly optimise by innovating on methods



STATE OF MIND

POLL



<https://www.menti.com/zi6vu7xzpt>



Milestones are evaluated objectively

Evaluate the solution at each
increment, not the
intermediate deliverables



STATE OF MIND

POLL



<https://www.menti.com/zi6vu7xzpt>



X-Teams

Teams have a rotating ambassadorial role, going out into the field and must network to facilitate their objectives



STATE OF MIND

POLL



<https://www.menti.com/zi6vu7xzpt>



Ubiquitous Language

The domain specific language (DSL) is found in all facets of the solution (the backlog, tests, architecture, code, documentation)



STATE OF MIND

POLL



<https://www.menti.com/zi6vu7xzpt>



Organize around value

Deliver added value
very quickly and
eliminate bureaucracy



STATE OF MIND

POLL



<https://www.menti.com/zi6vu7xzpt>



Systemic view

Any change needs to incorporate more holistic thinking to ensure the scope and actions required



STATE OF MIND

POLL



<https://www.menti.com/zi6vu7xzpt>



3 Amigos

The refinement of the US and more generally of the Backlog must be done in a workshop with a person who plays the role of Tester



STATE OF MIND

POLL



<https://www.menti.com/zi6vu7xzpt>



Incremental approach

Learning cycles should
be short



STATE OF MIND

POLL



<https://www.menti.com/zi6vu7xzpt>



Focus the organization on the customer

The choices and means must
be linked to the satisfaction of
the Customer



STATE OF MIND

POLL



<https://www.menti.com/zi6vu7xzpt>



Feature Team

Such a team has no technical barrier to generate the functionality the customer needs

PLANNING



POLL



<https://www.menti.com/zi6vu7xzpt>



Panarchy

Modeling the system
with ecocycles to
manage changes

PLANNING



POLL



<https://www.menti.com/zi6vu7xzpt>



Error Budget

Balance low quality
releases with
operational
circumstances

PLANNING



POLL



<https://www.menti.com/zi6vu7xzpt>



Shift Left

Do everything possible at all levels of the organization to try to shift the testing effort upstream of the solution



PLANNING

POLL



<https://www.menti.com/zi6vu7xzpt>



Shift Right

Be able to test in
production while
controlling the impacts

PLANNING



POLL



<https://www.menti.com/zi6vu7xzpt>



Theory of constraints

Identify bottlenecks and establish the right strategy for optimal production



PLANNING

POLL



<https://www.menti.com/zi6vu7xzpt>



Objectives Key Results (OKR)

Very high goals with key results that help us reach the expectations without ever reaching them (otherwise they were too simple)



PLANNING

POLL



<https://www.menti.com/zi6vu7xzpt>



Gemba Sessions

Go to the field to see for
yourself

PLANNING



POLL



<https://www.menti.com/zi6vu7xzpt>



Testing during the sprint

Rather than at the end of the Sprint or after



PLANNING

POLL



<https://www.menti.com/zi6vu7xzpt>



US Task force

The team decides that several people work on the same US in order to meet all the DoD criteria in the time of the Sprint



PLANNING

POLL



<https://www.menti.com/zi6vu7xzpt>



Mob-Programming

Developers are working in groups on a single workstation: while one is coding, all the others are participating for an early fix

PLANNING



POLL



<https://www.menti.com/zi6vu7xzpt>



Dependency management

Dependencies will help
testability



PLANNING

POLL



<https://www.menti.com/zi6vu7xzpt>



Product ideation in group

Implementing practices like
Event Storming, Lean Canvas,
25/10 Crowdsourcing, 1-2-4
All, User Story Mapping



PLANNING

POLL



<https://www.menti.com/zi6vu7xzpt>



Pair-Programming

Developers are able to work in pairs on the same workstation: while one is coding, the other is reviewing the code for an early fix



PLANNING

POLL



<https://www.menti.com/zi6vu7xzpt>



Definition of Ready (DoR)

A guide on US to
optimize their
development



PLANNING

POLL



<https://www.menti.com/zi6vu7xzpt>



Exploratory testing

A charter defines the exploration session of the application to search for bugs outside the existing test cases

PLANNING



POLL



<https://www.menti.com/zi6vu7xzpt>



NFR to test

Non-Functional Requirements are part of the US to have a potentially deployable product increment

PLANNING



POLL



<https://www.menti.com/zi6vu7xzpt>



MVP/MMF/MMR

Plan a marketable product, a feature and a release as soon as possible for quick feedback

PLANNING



POLL



<https://www.menti.com/zi6vu7xzpt>



Testability as soon as possible

Technical and social
testability must be
introduced as soon as
possible



PLANNING

POLL



<https://www.menti.com/zi6vu7xzpt>



ATDD

Generation of specifications by example that are executable



AUTOMATED TESTING

POLL



<https://www.menti.com/zi6vu7xzpt>



TDD

Development of unit tests
before the code following the
RED/GREEN/REFACTOR
phases



AUTOMATED TESTING

POLL



<https://www.menti.com/zi6vu7xzpt>



Automation of observables

On traceability, means and business



AUTOMATED TESTING

POLL



<https://www.menti.com/zi6vu7xzpt>



Living Documentation

Documentation is as
close as possible to the
code to be up to date



AUTOMATED TESTING

POLL



<https://www.menti.com/zi6vu7xzpt>



Automate
everything you can

Automation increases
reliability and the ability
to do more



AUTOMATED TESTING

POLL



<https://www.menti.com/zi6vu7xzpt>



Test Harness

Drivers and stoppers
accompany the
components to make
the tests FIRST



AUTOMATED TESTING

POLL



<https://www.menti.com/zi6vu7xzpt>



Multiple Pipelines

For fast processing of the pipeline at commit, others in // are created to run the slowest and lowest value tests in the background



AUTOMATED TESTING

POLL



<https://www.menti.com/zi6vu7xzpt>



FIRST Testing

Fast / Isolated /
Repeatable /
Self-validating / Timely



AUTOMATED TESTING

POLL



<https://www.menti.com/zi6vu7xzpt>



Automated Testing Ice cream cone

Automation concerns
unit tests more than
system tests



AUTOMATED TESTING

POLL



<https://www.menti.com/zi6vu7xzpt>



Merging the development / test automation ecocycles

The more remote the
activities, the less agile we are



AUTOMATED TESTING

POLL



<https://www.menti.com/zi6vu7xzpt>



Dark Launch

The new code is
deployed in production
without impacting the
current operation



ACTIVE TESTING

POLL



<https://www.menti.com/zi6vu7xzpt>



Canary Releasing

New code is deployed in production and activated only for certain test clients



ACTIVE TESTING

POLL



<https://www.menti.com/zi6vu7xzpt>



End-to-end testing
as soon as possible

Use dependencies &
collaborative modes



ACTIVE TESTING

POLL



<https://www.menti.com/zi6vu7xzpt>



Poka-Yoke

Immediate alert
mechanism that
prevents further action
in case of error



ACTIVE TESTING

POLL



<https://www.menti.com/zi6vu7xzpt>



Display pipeline status

Dashboard on the pipeline for immediate treatment of alerts



ACTIVE TESTING

POLL



<https://www.menti.com/zi6vu7xzpt>



Feedback from
resources, the
domain and the
business

Dashboard on the operation
for immediate treatment of
alerts



ACTIVE TESTING

POLL



<https://www.menti.com/zi6vu7xzpt>



Anomaly handling policy

Identify the actual degrees of
processing on the propagation
of anomalies and their
treatment



ACTIVE TESTING

POLL



<https://www.menti.com/zi6vu7xzpt>



Definition of Done (DoD)

Have a definition on a
finished US (ready to be
deployed)



ACTIVE TESTING

POLL



<https://www.menti.com/zi6vu7xzpt>



Compatibility tests

Interoperability, coexistence
with other systems,
compatibility with standards,
replaceability



ACTIVE TESTING

POLL



<https://www.menti.com/zi6vu7xzpt>



Security tests

Rights management ;
Identification of
vulnerabilities, attacks
and protections



ACTIVE TESTING

POLL



<https://www.menti.com/zi6vu7xzpt>



Operability tests

Are the solution and its artifacts sufficient for proper operation?



ACTIVE TESTING

POLL



<https://www.menti.com/zi6vu7xzpt>



Reliability testing

Fault tolerance of the
solution



ACTIVE TESTING

POLL



<https://www.menti.com/zi6vu7xzpt>



Transferability tests

Portability, adaptability,
installability,
compatibility



ACTIVE TESTING

POLL



<https://www.menti.com/zi6vu7xzpt>



Voluntary disruption of the system

Increase system
resilience - e.g. Chaos
Monkey at Netflix



ACTIVE TESTING

POLL



<https://www.menti.com/zi6vu7xzpt>



Multiply the types of tests on the solution

Combine contexts for better testing



ACTIVE TESTING

POLL



<https://www.menti.com/zi6vu7xzpt>



Andon

In the event of an identified error, immediate correction is required with an escalation that mobilizes the organization if this is not sufficient



ACTIVE TESTING

POLL



<https://www.menti.com/zi6vu7xzpt>



Monitoring of the solution

Alerts to mobilize immediate human action / Tickets for deferred processing / Logs for information



ACTIVE TESTING

POLL



<https://www.menti.com/zi6vu7xzpt>



Maintainability testing

Reusability, modularity,
stability, testability, ...



ACTIVE TESTING

POLL



<https://www.menti.com/zi6vu7xzpt>



Performance tests

Reaction time
depending on the load,
behavior in case of
overload



ACTIVE TESTING

POLL



<https://www.menti.com/zi6vu7xzpt>



Gamification of the Retrospective

The retrospective changes format regularly to maintain vigilance on continuous improvement

IMPROVE



POLL



<https://www.menti.com/zi6vu7xzpt>



Retrospective

Each team conducts its retrospective and what concerns the organization is escalated

IMPROVE



POLL



<https://www.menti.com/zi6vu7xzpt>



Niko-Niko calendar

We measure the
sustainability and
motivation of the teams

IMPROVE



POLL



<https://www.menti.com/zi6vu7xzpt>



Improvement of the First Pass Yield (FPY)

The organization
improves its ability to
get it right the first time



IMPROVE

POLL



<https://www.menti.com/zi6vu7xzpt>



5S on the Backlog

Support for technical
debt on Product
Backlog items

IMPROVE



POLL



<https://www.menti.com/zi6vu7xzpt>



5S on test cases

Support for technical
debt on test scenarios

IMPROVE



POLL



<https://www.menti.com/zi6vu7xzpt>



5S on documentation

Support for technical
debt on documentation

IMPROVE



POLL



<https://www.menti.com/zi6vu7xzpt>



Jidoka on the pipeline

Ability of the pipeline to be autonomous in error recovery

IMPROVE



POLL



<https://www.menti.com/zi6vu7xzpt>



Yokoten

The team organizes
itself to spread what it
has learned throughout
the organization

IMPROVE



POLL



<https://www.menti.com/zi6vu7xzpt>



5S on code

Support for technical
debt on the code

IMPROVE



POLL



<https://www.menti.com/zi6vu7xzpt>



Kaizen

Continuous
improvement is first
and foremost a mindset
for innovation

IMPROVE



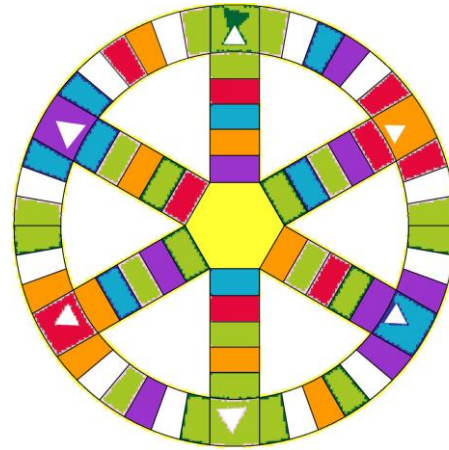
POLL



<https://www.menti.com/zi6vu7xzpt>

Alternatives

- Limit assessment to a subset
- Lean Coffee
- Agile Pursuit
- Learning practices and connected knowledge

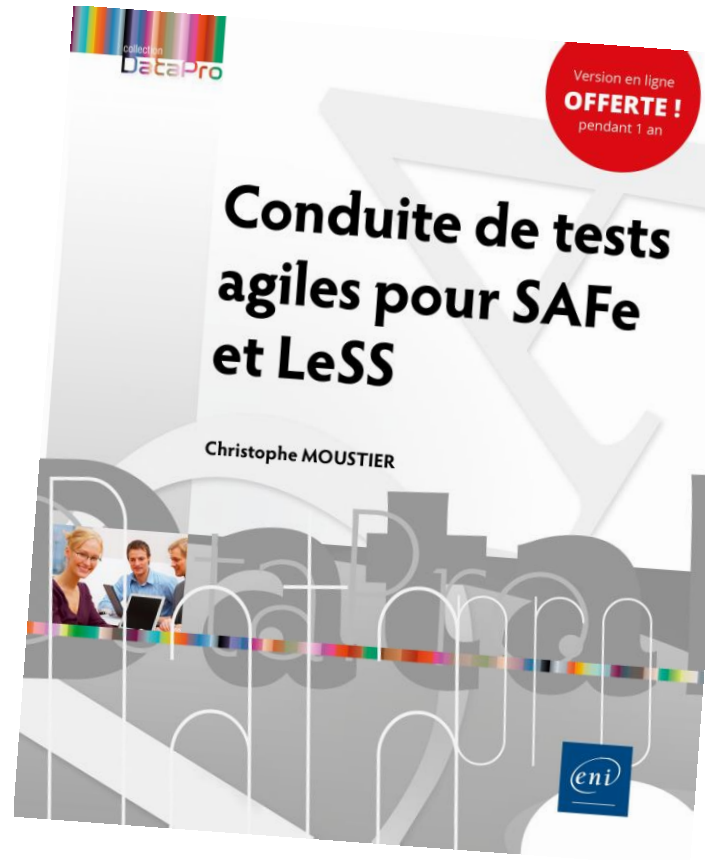


Klaxoon

To go further

- **[CMMi 2010]** : CMMI Product Team - « CMMI® for Development, Version 1.3 » - Software Engineering Process Management Program - 2010 - <https://resources.sei.cmu.edu/library/asset-view.cfm?assetid=9661>
- **[TMMi 2020]** : TMMi Foundation - « TMMi in the Agile world » - 2020 – v1.4 - <https://www.tmmi.org/tm6/wp-content/uploads/2020/01/TMMi-in-the-Agile-world-V1.4.pdf>
- **[Rayaprolu 2020]** : Pavan Rayaprolu - « Practical Approach for Improving Agile Testing Maturity » - MAI/2020 - <https://www.cigniti.com/blog/practical-approach-for-improving-agile-testing-maturity/> & <https://www.cigniti.com/blog/practical-approach-for-improving-agile-testing-maturity-part-2/>
- **[Bach 1994]** : James Bach - « The Immaturity of CMM » - American Programmer magazine - n°9194 - SEP/1994 - <http://sunnyday.mit.edu/16.355/bach-cmm.html>
- **[Mettler 2011]** : Tobias Mettler - « Maturity assessment models: a design science research approach » - Int. J. Society Systems Science, Vol. 3, Nos. 1/2 - 2011 - <https://www.alexandria.unisg.ch/214426/1/IJSSS0301-0205%2520METTLER.pdf>
- **[Jacobson 2007]** : Ivar Jacobson, Ian Spence et Pan-Wei Ng - « Enough of Processes - Lets do Practices » - Journal of Object Technology - VOL. 6, NO.6 - JUL/2007 - https://www.researchgate.net/publication/220299430_Enough_of_Processes_-_Lets_do_Practices
- **[Rohen-Harel 2010]** : Shirly Rohen-Harel - « ATMM – Agile Testing Maturity Model – Practical View » - AgileSparks 2010 - <https://fr.slideshare.net/AgileSparks/atmm-practical-view>
- **SHU-HA-RI**: <https://jisho.org/search/%E5%AE%88%E7%A0%B4%E9%9B%A2>

Christophe MOUSTIER



inetum.
Positive digital flow

<https://www.linkedin.com/in/christophemoustier/>

0623205659

Agility Maturity Cards by C. Moustier
(STLS DEC21)